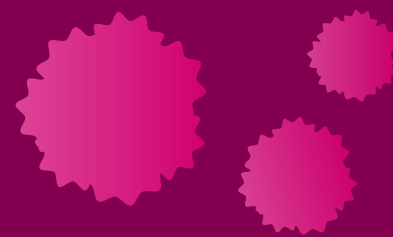


Understanding Mantle Cell Lymphoma (MCL)



What is MCL?



Lymphoma is a type of blood cancer. It usually develops when a **change, or mutation, occurs within a lymphocyte**, which is a type of white blood cell. This mutation causes the abnormal cell to replicate faster than, or live longer than, a normal lymphocyte.¹ **B cells and T cells** are the two types of lymphocytes that **can develop into lymphomas**.²



The **two main types** of lymphoma are **Hodgkin lymphoma and non-Hodgkin lymphoma**.¹



MCL is a **rare, aggressive or slow-growing non-Hodgkin lymphoma**, typically **resulting when B-lymphocytes mutate into malignant cells** in the outer edge of a lymph node (mantle zone).^{3,4}



There are **multiple factors which impact MCL treatment**, including stage of disease, age and overall health. Those who have a slow-growing disease, may not require immediate treatment, **while those with the more aggressive form may need to be treated quickly**.⁵

MCL Fast Facts



MCL represents **approximately 6% of all non-Hodgkin lymphoma cases in the US**.⁶



Men are more likely to have MCL than women.⁶



The **average age of diagnosis is the mid-60s**.⁶



MCL is often diagnosed as a late-stage disease that has spread to the gastrointestinal tract and bone marrow.³

Common Symptoms*

MCL may not appear to have symptoms during the early stages of disease. As the disease progresses, a person may experience^{2,4}:

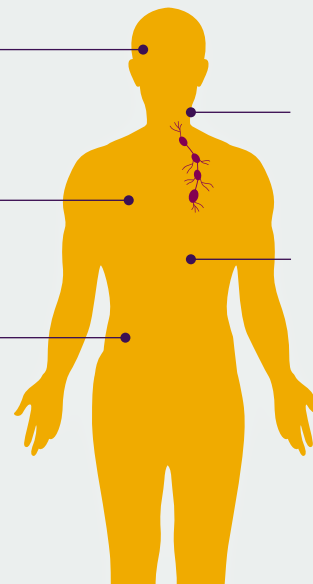
Fever and night sweats

Weakness and fatigue

Abdominal swelling or pain

Painless, swollen lymph nodes

Unexplained weight loss



*Symptoms are non-specific and could arise from other less serious conditions.

1. Lymphoma Research Foundation. About Lymphoma. <https://lymphoma.org/aboutlymphoma/>. Accessed August 2020.
2. Lymphoma Research Foundation. Non-Hodgkin Lymphoma (NHL). <https://lymphoma.org/aboutlymphoma/nhl/>. Accessed August 2020.
3. Lymphoma Research Foundation. Mantle Cell Lymphoma. <https://lymphoma.org/aboutlymphoma/nhl/mcl/>. Accessed August 2020.
4. National Organization for Rare Disorders. Mantle Cell Lymphoma. <https://rarediseases.org/rare-diseases/mantle-cell-lymphoma/>. Accessed August 2020.
5. Lymphoma Research Foundation. Mantle Cell Lymphoma: Treatment Options. <https://lymphoma.org/aboutlymphoma/nhl/mcl/mcltreatment/>. Accessed August 2020.
6. Leukemia & Lymphoma Society. Mantle Cell Lymphoma Facts. https://www.lls.org/sites/default/files/file_assets/FS4_MCL_Facts_Rev.pdf. Accessed August 2020.