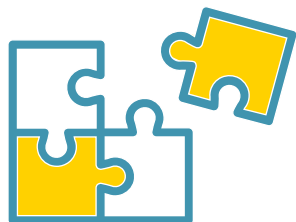




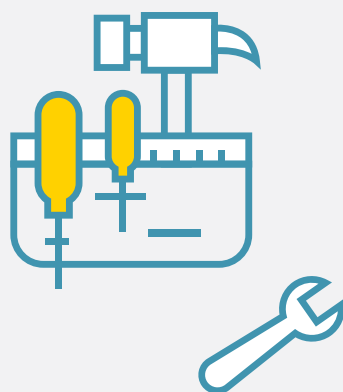
## Navigating Secondary Acute Myeloid Leukemia

Do you or a loved one have myelodysplastic syndromes or secondary acute myeloid leukemia and are looking for resources or ways to connect with others on your journey?



People affected by myelodysplastic syndromes (MDS) or secondary acute myeloid leukemia (sAML) often face many uncertainties on how these diseases develop and progress, what available treatment options there are and the impact they may have on everyday life.

For those in search of answers, Find the Right Fit can provide information and educational resources for people living with MDS or sAML, as well as their loved ones who often take on the role of caregiver.



A cancer diagnosis can be overwhelming, but **knowledge is power**. To help navigate each person's individual journey, Find the Right Fit **provides a collection of tools** including articles, videos, patient stories and more that:



Educate on the science behind MDS and sAML



Offer information regarding treatment options and coping strategies



Connect patients and their loved ones with the appropriate resources to manage an MDS or sAML diagnosis with confidence

Visit [FindTheRightFit-sAML.com](https://FindTheRightFit-sAML.com).

### About AML

- ▶ AML is an aggressive (fast-growing) disease in which too many myeloblasts (immature white blood cells) are found in the bone marrow and blood.<sup>1,2</sup> sAML is one type of AML that may be linked to specific preexisting conditions, like MDS, or to prior treatment for a malignant or non-malignant disease.<sup>3</sup>

Visit [FindTheRightFit-sAML.com](https://FindTheRightFit-sAML.com) to learn more about sAML subtypes and treatment options.

### About MDS



- ▶ MDS, a form of blood cancer, are an often unrecognized, under-diagnosed, rare group of bone marrow failure disorders where the body can no longer make enough healthy, normal blood cells in the bone marrow.<sup>4</sup>



- ▶ The cause of MDS is unknown, but potential triggers include radiation and chemotherapy for cancer, as well as long-term exposure to certain environmental or industrial chemicals, such as benzene.<sup>4</sup>

Visit [FindTheRightFit-sAML.com](https://FindTheRightFit-sAML.com) to learn how MDS can progress to sAML.

Find the Right Fit is a program from **Jazz Pharmaceuticals**, developed with consultation from the **Myelodysplastic Syndromes Foundation, Inc.** and the **Cancer Support Community**.



### References

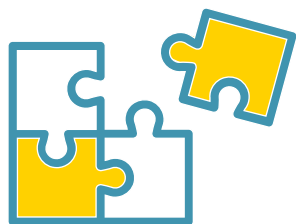
1. National Cancer Institute. NCI dictionary of cancer terms. <https://www.cancer.gov/publications/dictionaries/cancer-terms>. Accessed June 2, 2020.
2. National Cancer Institute. Adult acute myeloid leukemia treatment (PDQ®) – patient version. <https://www.cancer.gov/types/leukemia/patient/adult-aml-treatment-pdq>. Updated March 6, 2020. Accessed May 13, 2020.
3. Ossenkoppele G, Montesinos P. Challenges in the diagnosis and treatment of secondary acute myeloid leukemia. *Crit Rev Oncol Hematol*. 2019;138:6-13.
4. MDS Foundation. What is MDS? <https://www.mds-foundation.org/what-is-mds/>. Accessed June 2, 2020.





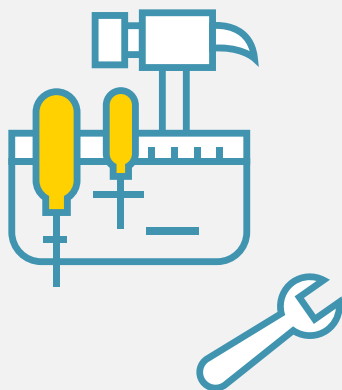
## Navigating Secondary Acute Myeloid Leukemia

**Do you or a loved one have myelodysplastic syndromes or secondary acute myeloid leukemia and are looking for resources or ways to connect with others on your journey?**



People affected by myelodysplastic syndromes (MDS) or secondary acute myeloid leukemia (sAML) often face many uncertainties on how these diseases develop and progress, what available treatment options there are and the impact they may have on everyday life.

For those in search of answers, Find the Right Fit can provide information and educational resources for people living with MDS or sAML, as well as their loved ones who often take on the role of caregiver.



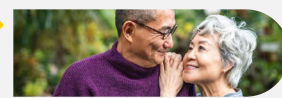
A cancer diagnosis can be overwhelming, but **knowledge is power**. To help navigate each person's individual journey, Find the Right Fit **provides a collection of tools** including articles, videos, patient stories and more that:



Educate on the science behind MDS and sAML



Offer information regarding treatment options and coping strategies



Connect patients and their loved ones with the appropriate resources to manage an MDS or sAML diagnosis with confidence

Visit [FindTheRightFit-sAML.com](https://FindTheRightFit-sAML.com).

### About AML



- ▶ AML is an aggressive (fast-growing) disease in which too many myeloblasts (immature white blood cells) are found in the bone marrow and blood.<sup>1,2</sup> sAML is one type of AML that may be linked to specific preexisting conditions, like MDS, or to prior treatment for a malignant or non-malignant disease.<sup>3</sup>

Visit [FindTheRightFit-sAML.com](https://FindTheRightFit-sAML.com) to learn more about sAML subtypes and treatment options.

### About MDS



- ▶ MDS, a form of blood cancer, are an often unrecognized, under-diagnosed, rare group of bone marrow failure disorders where the body can no longer make enough healthy, normal blood cells in the bone marrow.<sup>4</sup>
- ▶ The cause of MDS is unknown, but potential triggers include radiation and chemotherapy for cancer, as well as long-term exposure to certain environmental or industrial chemicals, such as benzene.<sup>4</sup>

Visit [FindTheRightFit-sAML.com](https://FindTheRightFit-sAML.com) to learn how MDS can progress to sAML.

Find the Right Fit is a program from **Jazz Pharmaceuticals**, developed with consultation from the **Myelodysplastic Syndromes Foundation, Inc.** and the **Cancer Support Community**.



### References

1. National Cancer Institute. NCI dictionary of cancer terms. <https://www.cancer.gov/publications/dictionaries/cancer-terms>. Accessed June 2, 2020.
2. National Cancer Institute. Adult acute myeloid leukemia treatment (PDQ®) – patient version. <https://www.cancer.gov/types/leukemia/patient/adult-aml-treatment-pdq>. Updated March 6, 2020. Accessed May 13, 2020.
3. Ossenkoppele G, Montesinos P. Challenges in the diagnosis and treatment of secondary acute myeloid leukemia. *Crit Rev Oncol Hematol*. 2019;138:6-13.
4. MDS Foundation. What is MDS? <https://www.mds-foundation.org/what-is-mds/>. Accessed June 2, 2020.